



**BUILD YOUR BODY, YOUR WAY**



No downtime

Non invasive

30 Minute Treatment

Proven effective on both MUSCLE & FAT

**InShape - Innovative Technology, with Impressive Full Body Results**

Introducing InShape - the revolutionary EMS device that offers a time-efficient, non-invasive, and highly effective solution for Fat reduction and muscle building to tone and sculpt the body. InShape utilises electromagnetic fields to induce forced muscular contractions that are equivalent up to 30,000 squats or sit-ups, making it a perfect alternative to high-intensity workouts. With instant results, often from the first treatment and in just six 30-minute sessions, your clients can enjoy dramatic results that include reduced fat and increased muscle mass. InShape is a pain-free treatment, ensuring there is no downtime or discomfort for your clients. Experience the next generation of body sculpting today with InShape.

**Why choose InShape for your clinic?**

InShape uses a full-body approach to muscle toning paired with highly competitive pricing which enables not only a faster return on your investment but the opportunity to offer more competitive pricing. The device is 3 times more powerful than the closest market competitor InShape offers 7 Tesla energy output whilst our competitor only 2.5 Tesla, ensuring you achieve the fastest, most impressive outcome for your clients.

**The Number 1, Non-Invasive, and Pain-Free Solution to Tighten and strengthen the Pelvic Floor, improving Stress Incontinence**

Upgrade your InShape package to include the InShape Pelvic Chair. This optional extra is designed to help clinics actively treat pelvic floor dysfunction using the safe application of electromagnetic fields to induce forced muscular contractions, targeting all muscle groups in the pelvic area. Your customers will start to feel improvements from the first session with InShape Pelvic. With up to six 30-minute sessions, patients can experience significant improvements in their pelvic muscle strength and overall health. The treatment is non-invasive and pain-free, making it an ideal solution for clinics looking to provide their patients with the most advanced and efficient treatments available for stress incontinence and improving pelvic muscle control.



Product Name	InShape	Power consumption	2.3kVA
Technology	Electromagnetic system	Dimension	460(W) x 590(D) x 1280(H) mm
Electrical requirement	230V 50-60hz	Weight	66kg



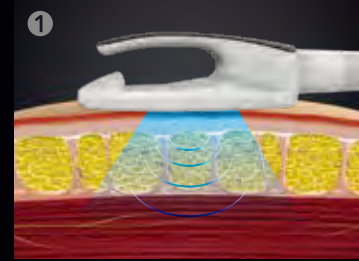
healthxchange devices

www.healthxchangedevices.com  
info@healthxchangedevices.com



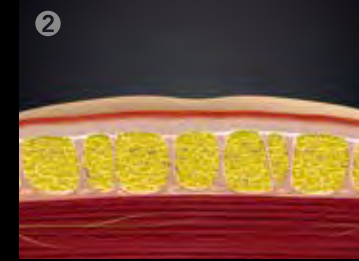
# INSHAPE

## Treatment Procedure



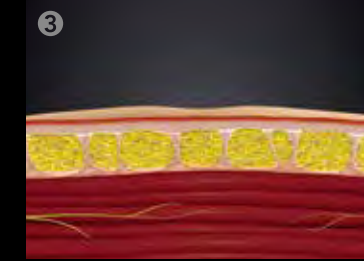
### Muscle Workout

InShape induces strong contractions on muscle in order to induce automatic muscle training.



### Microscopic Tears in Muscle

Muscle does automatic workout by using the decomposed fats as energy source. Meanwhile, microscopic tears are caused on myofibers as consequence of intensive contraction of muscles.



### Muscle Growth & Fat Burning

Muscle recovers and it gets rebuilt gradually. It results in Muscle Growth and Fat Burning for better body shaping.

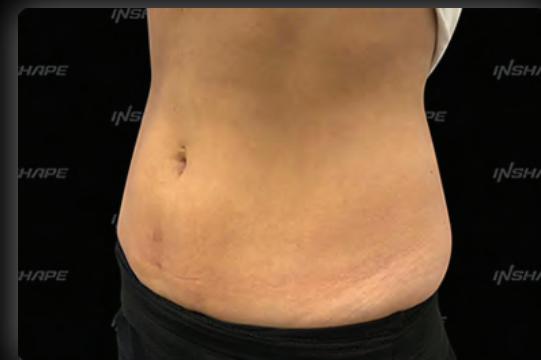
## Before and After



BEFORE



AFTER



BEFORE



AFTER

## Practical 2 applicators

2 applicators for multiple area

Time saving treatment

Safe & effective

Selective treatment is possible

New generation of  
Electromagnetic system for body shaping



**30MINUTE**  
BODY SHAPING

Quick 30 minutes InShape treatment allows intensive automatic muscle workout in brief time. It enables to go back to normal routine right after treatment, without any discomfort in body nor in normal life.